




*Sustaining the culture  
and national identity  
of the Tibetan people*

The Tibet Fund  
Annual Report 2010





*The Tibet Fund* works to ensure that Tibetan culture and identity remain a vibrant part of our global heritage and that Tibetans in exile and in Tibet will thrive in today's world. Our priorities are guided by the needs of the Tibetan community and include:

- ❖ Schools and education, including professional degree scholarships that build the self-sufficiency of the community;
- ❖ Economic development, including small business, agriculture and vocational training that helps to revitalize the refugee settlements;
- ❖ Health care, sanitation, and systemic solutions to health issues that threaten the well-being of Tibetans;
- ❖ Other programs of vital importance including refugee rehabilitation, infrastructure, emergency relief, and religious and cultural preservation;
- ❖ A sponsorship program that enables donors to support individual Tibetan children, monks, nuns and the elderly.

This year's report highlights our activities, financial status and generous supporters. For an in-depth look at our programs and the impact we are having on the Tibetan community in exile and in Tibet, we invite you to visit [www.tibetfund.org](http://www.tibetfund.org).

*For 30 years, The Tibet Fund has worked closely with our Central Tibetan Administration in Dharamsala to understand the priorities of the Tibetan community. With the aid of The Tibet Fund, our people have built schools, homes for the elderly and other refugees in the settlements. The Tibet Fund has also enabled us to create programs essential to the preservation of our cultural heritage, the very seed of our civilization.*

*His Holiness the 14th Dalai Lama*



## TABLE OF CONTENTS

Message from the President	4
Program Highlights	5
Humanitarian Assistance	6
Sponsorship Program	7
Education	8
Health Care	9
Cultural and Religious Preservation	10
Economic and Community Development	12
Programs in Tibet	13
Statement of Financial Position	15
Statement of Activities	16
2010 Donors	17
Tibet Fund Board and Staff	19



## DEAR FRIENDS AND SUPPORTERS,

With your help, The Tibet Fund has played a vital role in sustaining and strengthening the refugee community for the past 30 years. From modest beginnings, The Tibet Fund has grown to become the primary vehicle for international humanitarian assistance from individuals, foundations and government agencies. In this role, The Tibet Fund has brought urgently needed resources to the Tibetan-run institutions and grassroots organizations that sustain the Tibetan way of life, language and cultural traditions.



We are proud of what has been accomplished with our donors' support. In the following pages, you will learn about some of the important programs and services that have been provided during the past year. The Tibet Fund is dependent on the goodwill and generosity of numerous individuals, foundations and the U.S. government.

We would like to take this opportunity to express our sincere and humble gratitude to each and every supporter, especially the U.S. Congress and Administration which have lent significant support, enabling The Tibet Fund to provide vital humanitarian aid and scholarships to Tibetans in the refugee communities in India, Nepal and Bhutan and to Tibetans in Tibet. We are also grateful to our Board of Directors for their tireless work, guidance and dedication, which have ensured The Tibet Fund's success over the past 30 years. I also thank our small staff without whose dedication we could not have achieved the results of which we are proud.

I appeal to all our friends and supporters to continue helping us in our efforts to strengthen the Tibetan community, to create greater self-reliance and a brighter future for the next generation of Tibetans.

On behalf of those we serve, thank you so much.

A handwritten signature in black ink, appearing to read 'Rinchen Dharlo'. The signature is fluid and cursive, with a large initial 'R'.

Rinchen Dharlo  
President

# PROGRAM HIGHLIGHTS

The Tibet Fund was established in 1981 under the auspices of His Holiness the Dalai Lama to help Tibetan refugees to rebuild their lives and preserve their distinct cultural, religious and national identity in exile. We work closely with the Central Tibetan Administration (CTA) departments of Finance, Health, Education, Home, and Religion & Culture in Dharamsala, India to implement programs for the 110,000 refugees living in settlements and scattered communities in India, Nepal, and Bhutan. We also partner with the Snow Lion Foundation to administer grant funds and deliver programs to schools, health clinics and elder homes in Nepal.



The CTA has built a model settlement system that has been heralded as an outstanding example for other populations facing long-term displacement from their homelands. Still, despite the CTA's extraordinary achievements, the continued influx of new arrivals over the years is straining the community's resources beyond its capacity. Roughly 25 percent of the Tibetan population exists at or near the poverty level. A serious lack of employment opportunities in the settlements is forcing families to seek alternative sources of income in scattered communities and urban centers, away from the Tibetan-run schools, clinics, and religious and cultural life

that sustain Tibetan identity. Out of concern for the long-term sustainability of the exile community, The Tibet Fund is working to support a wide range of programs that will strengthen the refugees' economic prospects and promote self-sufficiency.



In Tibet, we support grassroots organizations that house, educate and care for orphans so that they can become productive members of their communities, and we assist NGOs that treat and prevent blindness, especially in remote areas where there is no access to medical care. To help disadvantaged Tibetans advance professionally and contribute to the health and economic development of their communities, we provide scholarships for higher education and support English language and vocational skills training programs.



We also leap into action to raise funds for emergency relief and long-term assistance when natural disasters strike, such as the floods that hit the Tibetan settlements in Ladakh and the devastating earthquake that struck a wide-spread area in and around Yushu in eastern Tibet in 2010.



# Humanitarian Assistance



Every year, Tibetans flee from their homeland to escape from the oppressive policies and human rights abuses of the Chinese government. Until 2008, an average of 2,500 were able to escape each year. Since then, the Chinese authorities have



imposed extreme security measures and the number who are able to escape has dropped. From May 2010 to May 2011, 844 refugees managed to make the dangerous crossing over the Himalayan mountains. These refugees arrived in poor health and

at reception centers in Delhi and Dharamsala; health care, clean water, and sanitation in various settlements; education in three schools that care for newly arrived children and young adults, and traditional learning centers (monasteries and nunneries) where they can pursue religious studies that were denied to them in



Tibet. The Reception Center in Dharamsala arranged audiences for newcomers with His Holiness the Dalai Lama before they were referred to schools or traditional learning centers, or moved on into the community. The PRM grant also supported much-needed educational programs, health clinics, professional

development training for teachers and health workers, and public health awareness programs for the long-standing refugees in Nepal, who are struggling to survive economically since the collapse of the carpet and tourism industries in Nepal several years ago.



The PRM grant also supported continuing work on a state-of-the-art Health Information System and the construction of a new Refugee Reception Center in Dharamsala, to replace an overcrowded facility located in a very congested and unhealthy area of town. The new facility, still under construction in 2010, sits in a tranquil spot that provides a much a better environment for the newly arrived refugees' recovery.



# Sponsorship Program



The Tibet Fund's Sponsorship Program enables donors to support individual monks, nuns, children and elders who have no family members to contribute to their upkeep. Many of the children are orphans or new arrivals whose parents have sent them into exile to obtain a modern education in their own language. In 2010, we provided \$136,708 to support 128 monks, 49 nuns, 312 children (including seven students at the Tibetan Institute of Performing Arts), 23 disabled children, and nine elders. These sponsorships are vitally important to the exile community's monastic institutions, schools, performing arts organizations, and elder homes that are constantly struggling to provide nutritious meals, clothing, educational materials, training, health care, and other necessities to their residents.



The Tibet Fund underwrites all of the administrative costs of the Sponsorship Program so that we can send 100 percent of our sponsors' funds to India and Nepal where they are most needed. Our full-time Sponsorship Coordinator works with the various institutions to ensure that the beneficiaries maintain contact with their sponsors.



The Tibet Fund's Sponsorship Program supported the following monasteries, nunneries, schools and elder homes in 2010:

## MONASTERIES

Chuwar Gadhen Dopheling  
 Dongyu Gatseling  
 Drepng Gomang  
 Drepung Loseling  
 Gaden Shartse  
 Ganden Jangtse  
 Ganden Tharpa Choling  
 Gongkar  
 Gyudmed Tantric  
 Gyurmeling  
 Gyuto Tantric University  
 Institute of Buddhist Dialectics  
 Khari  
 Kirti  
 Sera Jhe  
 Sera Mey  
 Shalu  
 Tashi Kyil  
 Tashi Lhunpo  
 Thubchog Gatsel Ling

## NUNNERIES

DK Samteling  
 Dolmaling  
 Dongyu Gatseling  
 Geden Choeling  
 Jamyang Choling Institute  
 Jangchub Choeling  
 Keydong Thukche Choeling  
 Ladakh Nuns Association  
 Namdrolling  
 Sakya Rinchen Choeling  
 Samtenling Nunnery  
 Tilokpur  
 Tsogyal Shedupling

## SCHOOLS

Atisha Primary School  
 CST, Chauntra

CST, Dalhousie  
 CST, Kalimpong  
 CST, Nanital  
 CST, Poanta  
 CST, Ravangla  
 CST, Shimla  
 CST, Sonada  
 CST, Darjeeling  
 CST, Mussoorie  
 Karuna Home for the Disabled Children  
 Lophel Ling School, Manang  
 Mewoen Tsuglag Petoen  
 Ngoenga School for Tibetan Handicapped Children  
 STS, Bhuntar  
 STS, Dikyiling  
 STS, Gangtok  
 STS, Pokhriabong  
 STS, Shillong  
 TCV, Chauntra  
 TCV, Dharamsala  
 TCV, Outreach Program  
 TCV, Selakui  
 TCV, SOS Bylakuppe  
 TCV, SOS Gopalpur  
 TCV, SOS Ladakh  
 TCV, Suja  
 Thangdong Lungkar Performing Arts  
 Tibetan Homes Foundation  
 Tibetan Institute of Performing Arts  
 Tibetan Medical & Astro Institute  
 Yongling Creche and Kindergarten

## ELDER HOMES

Tsering Elder Home



# Education

His Holiness the Dalai Lama has said that education is the exile community's highest priority if Tibetan refugees are to thrive in the global economy, sustain their community, and contribute to human development in the modern world. He has requested The Tibet Fund to focus on supporting programs that will improve the quality of secondary education and increase access to higher education leading to professional degrees.



Many children and young adults arrive in exile without academic skills or formal training in Tibetan language and culture. In 2010, the US Department of State Bureau of Population, Refugees and Migration (PRM) humanitarian assistance grant

supported 950 refugee students at the Bir Tibetan Children's Village (TCV) School; 481 students at the Transit School in Dharamsala; and 707 children at the Tibetan Homes Foundation in Mussoorie. The grant also supported stipends for 6,272 students at 67 Traditional Learning Centers; college scholarships for 36 students in India; professional training for 105 teachers; career guidance for 2,905 students; and teacher trainings and other education programs in Nepal.

## Tibetan Scholarship Program

The Tibet Fund has administered the US Department of State-funded Tibetan Scholarship Program (TSP) since 1989 in collaboration with the CTA Department of Education. As of 2010, we enrolled 386 Tibetan students in masters degree and certificate programs in some of the best American universities and colleges (see list on page 18 of this report). In 2010, 27 students studied in fields such as Environmental Studies, Film Studies, International Relations, Journalism, Law, Business, Neuroscience, Public Administration, Public Health, School Counseling, Special Education, and Social



Work. Over the years, alumni from the program have returned to India and Nepal to serve the exile community as officials in the CTA, educators, health workers, business leaders and heads of community-based organizations.

## Professional Scholarship Program

In 2008, The Tibet Fund launched the Professional Scholarship Program to help overcome the serious shortage of well-trained professionals in the exile community, particularly in the medical and health care fields. Many worthy young Tibetans are unable to pursue costly professional degrees either because they are orphans or their families are barely subsisting in the settlement economy. In 2010, The Tibet Fund provided \$21,015 to support 20 students in the health care fields. In 2011 we are expanding the program to include other professions such as engineering, science, architecture, business, and community development. Students who receive more than \$3000 in scholarship support are required to perform a minimum of two years of service in their community upon completion of their studies.



## Supplemental Nutrition for Tibetan Children

Many of the Tibetan schools in the exile community lack the resources to provide an adequate diet for their students. With the generous support of Ann M. Down, the Tibet Fund gave a grant of \$30,000 to the Tibetan Children's Education and Welfare Fund for supplemental nutrition for 3,148 children from pre-primary to middle, secondary and university level students at 13 schools.

## Active Non-violence Education Center

Formed by peace activists Rabbi Everett Gendler and Dr. Mary Gendler, and Executive Director Tenpa C. Samkhar, the Active Non-violence Education Center, an NGO based in Dharamsala, educates Tibetans about the importance of participation in the democratic process and non-violent resistance as an appropriate course of action for the Tibetan national cause. In 2010, the Gendlers provided a \$11,000 grant as well as their personal time to provide trainings for ANEC.



# Health Care



In 2010, the US Department of State Bureau of Population, Refugees and Migration (PRM) grant supported vitally important health care for tens of thousands of Tibetan refugees including TB screenings for 22,345 students and treatment for 578 TB patients; medical care and services for 12 Leprosy, and 31 mental health patients and 1,474 mothers and children; stipends for 177 disabled refugees; hospitalizations for 373 destitute refugees; essential medicines for 2,061 patients; nutritional food for 110 TB patients; vaccinations for 1,595 under-five children; professional training for 102 health care workers and public health awareness for 63,000 refugees. The CTA



Department of Health (DoH) implemented this program

## Delek Hospital

through its network of seven hospitals, five Primary Health Centers and 47 clinics located in the settlements. In 1971 to provide much-needed health care to the Tibetan and local Indian communities in Dharamsala, India. In 2010, The Tibet Fund received very generous support from the Namaste Foundation (\$5,000), the Warrington Foundation (\$15,000) and John and Molly Bailey (\$25,000) for Delek Hospital's general operating expenses. The 45-bed Delek Hospital was founded



of seven hospitals, five Primary Health Centers and 47 clinics located in the settlements.

In 1971 to provide much-needed health care to the Tibetan and local Indian communities in Dharamsala, India.

In Nepal, the PRM grant supported health care services at 12 clinics, salaries for 14 health workers, a health coordinator and a doctor professional

In collaboration with the Friends of Tibetan Delek Hospital's Breathe Free Tibet fundraising campaign, we provided \$24,286 for



development training for 12 health workers; medical assistance for 2,730 refugees; public health education on HIV/AIDS, oral health for 3,800 children; and medical care and other services for 46 elders. The health care programs in Nepal were managed by the Snow Lion Foundation.

medical equipment and the development of a TB prevention and treatment program. Tuberculosis is the primary cause of death in the Tibetan refugee population, whose TB rate is more than four times the rate in India and 150 times the rate in the US. Through a partnership with Johns Hopkins University's Center for Tuberculosis Research and others, Delek is developing a comprehensive strategy that will be implemented by the DoH across the entire Tibetan health care system in the next few years.

The PRM grant also supported the development of a Health Information System (HIS) that will enable the DoH to improve health care services and policies for the refugee population in India and Nepal. The Tibet Fund created a partnership with Johns Hopkins



# Cultural and Religious Preservation



The Tibet Fund has long recognized the role that Tibetan culture and religion play in sustaining the spirit and vitality of the Tibetan people. Since its founding, we have dedicated considerable resources and expertise to strengthening cultural programs and organizations in the exile community. These have included the Tibetan Institute of Performing Arts, publishing and printing projects, films, oral history and storytelling projects, the construction of libraries, and the digitization of rare religious texts at the Tibetan Library of Works and Archives.



## 50 Years in Exile

From March 2009 to March 2010, Tibetans around the world commemorated the 50th anniversary of the Tibetan diaspora. To raise awareness about the Tibetan exile community's achievements since 1959 and to celebrate the survival of Tibetan culture and its impact on the world, we organized a series of projects and events including Wisdom and Compassion for Challenging Times, a dialogue on 'Universal Ethics' between His Holiness the Dalai Lama and Mary Robinson, the first woman President of Ireland and former UN High Commissioner for Human Rights, at Town Hall; and Celebrate Tibet Family Day at the Rubin Museum

of Art in New York City. We also created a special website ([www.50yearsinoxile.org](http://www.50yearsinoxile.org)) that featured information about the institutions that have sustained the Tibetan way of life, language, and cultural traditions for a half century outside Tibet.

## The Thank You Tibet! Campaign

To gather messages of support and appreciation from around the world for His Holiness the Dalai Lama and the Tibetan people, we created Thank You Tibet!, a global campaign and website that began with Nobel Peace Laureates Shirin Ebadi's, Mairead Maguire's, and Jody Williams's visit to Dharamsala, India to deliver a Statement of Support signed by eight Nobel Peace laureates in person to His Holiness.



The Thank You Tibet! campaign culminated on March 4, 2010 with a concert at the Cathedral of St. John the Divine curated by composer Philip Glass with performers Laurie Anderson, Bobby McFerrin, John Giorno, Tenzin Kunsel, Michael Imperioli, Shirin Ebadi and Jody Williams and cultural anthropologist Elizabeth Lindsey. The program was blessed by Tibetan monks from various monasteries. His Holiness the Dalai Lama's Representative, Lobsang Nyandak, offered traditional white scarves to the performers on behalf of the Tibetan people.

*Tibetan wisdom and contemplative practice have opened new horizons in our understanding human nature and the interdependence of life. The impact on our global community and our lives has been profound. The word "Tibet" has become synonymous with our cherished ideals of freedom of spirit, inner development and compassion. It also stands as a reminder that today 150,000 Tibetans remain in exile from their homeland.*

– Michael Imperioli





The Tibet Fund's annual gala dinner at the Pierre Hotel was led by Chef Eric Ripert, who invited nine other celebrity chefs—Dan Barber, Stephane Becht, Daniel Humm, Gavin Kaysen, Anita Lo, Laurent Manrique, George Mendes, Sam Talbot, and Michael White—to share their culinary talents. Jazz musician Stanley Jordan, known for his extraordinary renderings of classical music, entertained the gathering.



Pierre Hotel very generously donated its magnificent ballroom and facilities for the occasion.

### Other Cultural Programs

With generous support from Dr. Victoria Sujata, we provided a \$5,508 grant to the Norbulingka Institute in Dharamsala, India for its Finish Casting House. Norbulingka is dedicated to handing down cultural traditions and restoring standards by providing training, education and employment for Tibetans. It seeks to create an international awareness of Tibetan values and their expression in art and literature.



*His Holiness the Dalai Lama and the Tibetan people have given us a brilliant culture of non-violence and compassion. It is an honor to offer our thanks by supporting the humanitarian efforts of the Tibet Fund at this difficult time in Tibetan history.*  
— Eric Ripert

### Sera Mey Monastery

The Tibet Fund received \$14,550 from the Six Paramitas Group, comprised of members of the Vietnamese community in New York City to assist Sera Mey Monastery, one of Tibet's major monasteries that has been re-established in the Bylakuppe settlement in south India.

Seventeen artists, photographers and others provided beautiful and stirring art, photography and other delightful items for our auction. They included Phil Borges, Lowell Boyers, Ginger Chih, Francesco Clemente, Tom Colicchio, Lynn Davis, Mitch Epstein,

### 4 Rivers Documentary

Tibet Fund assisted Tenzin Phuntsok, whose film, 4 Rivers, sheds light on the current conditions and impact of pollution and large-scale construction of infrastructure projects on the Indus, Brahmaputra, Karnali, and Sutlej rivers which all originate on the Tibetan Plateau. The Orange County Community Foundation provided a total of \$45,000 in funding for this project in 2010.



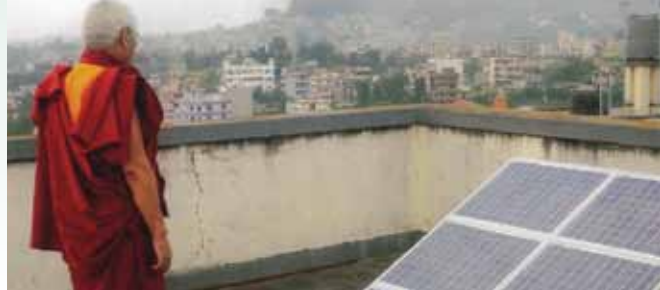
Donald & Era Farnsworth, Richard Gere, Grace Family Vineyards, Gonkar Gyatso, Jacinta Hayne, Kenro Izu, Lisa Kristine, Peter Max, Glenn H. Mullin, Stephanie Odegard, Tashi Lhunpo Monastery, Third Eye Travel, Nicholas Vreeland, and Sonam Zoksang. The

### Preservation of Buddhist Culture in Mongolia

For several years, Tibetologist Glenn Mullin has been working to rebuild the fragile traditional culture of Mongolia, which was decimated under the Soviet Stalinist regime prior to 1991. He founded a local NGO and has spearheaded a wide range of projects including renovating the Nicholas Roerich House in Ulaanbaatar, documenting Buddhist Art and building a website for the Zanabazar National Museum. In 2010, The Tibet Fund facilitated \$18,934 in funding for Glenn's initiatives.



# Community & Economic Development



In 2010, The Tibet Fund worked to improve living conditions in the exile community through support for emergency relief, infrastructure projects, elder care and leadership training. To help revitalize the settlements and strengthen the economic base of the refugee community, we have begun planning for a model small business development project that will provide meaningful employment for marginalized Tibetan youth.

## Flood Recovery in Ladakh



In August 2010, a devastating flash flood hit Tibetan camps in Choglamsar and surrounding areas of Leh Ladakh. Approximately 175 people died and more than 500 were injured. Many homes were destroyed, the irrigation canal was damaged and large boulders and debris covered more than 45 acres of agricultural land. The Tibet Fund received a \$46,635 grant from the US Department of State and administered the funds for the Central Tibetan Relief Committee, which worked with the local people to restore the land and rebuild homes, and the canal and flood protection bunds in time for spring planting.

## Solar Lighting for the Srongtsen School

With funding from the Marin San Francisco Jewish Community Teen Foundation and proceeds from Dreams of Tibet, a special event organized by Tibet supporters in Seattle, The Tibet Fund gave an \$8,600 grant to the Srongtsen School in Kathmandu, Nepal for solar lighting. This green-technology project is enabling the children to study for longer hours and improve their academic performance. It has also relieved the school of its dependency on gasoline for back-up generators when the power in Kathmandu shuts down.

## Elder Homes

With funding from Dreams of Tibet, Tibet Fund gave the Tsering Elders Home in Kathmandu a grant of \$5,500 to install a solar lighting system. This project will reduce accidents and make a more secure and accessible environment for the elders at the home. The Tibet Fund also received a generous donation of \$15,000 from Dr. Victoria Sujata to support 50 elders in a CTA-run Old Folks Home in Kalimpong, a remote town in Darjeeling, India. The residents come from neighboring communities including Darjeeling, Sonada, Gangtok, Ravangla, Siliguri and Bhutan.

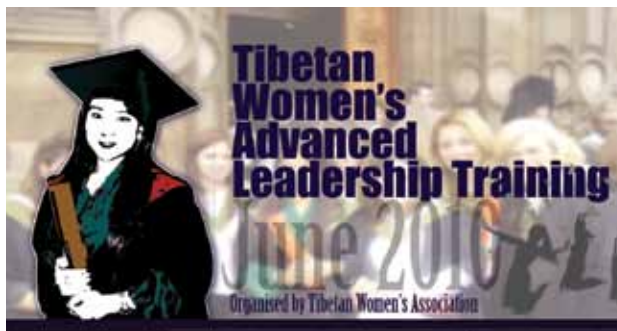


## Khawa Karpo Tibetan Cultural Center

The Tibet Fund administered a \$16,500 grant from the National Endowment for Democracy for the Khawa Karpo Cultural Center (KKCC), a grassroots NGO in Dharamsala dedicated to the preservation of Tibetan identity and culture. Among its many projects are a weekly Tibetan language newspaper, various publications on Tibet and Tibetan history, and a lively website with resources aimed at promoting participation in Tibetan community affairs. With generous support from Ann M. Down, we provided KKCC an additional \$10,000 in 2010.

## The Tibetan Women's Association

The Tibet Fund secured a \$9,700 grant from The Shelley and Donald Rubin Foundation for a two-week leadership training program organized by the Tibetan Women's Association (TWA) for 30 Tibetan women working in the CTA and the Tibetan settlements. TWA's previous leadership trainings focused on general leadership skills for Tibetan lay women and nuns. This training was more intensive and focused specifically on empowering women as political representatives.



# Programs in Tibet



In 1994, The Tibet Fund initiated the Tibet Assistance Program to address the unmet health, educational and economic development needs of Tibetans in Tibet. Working with international and Tibetan grassroots organizations, we support orphanages, eye clinics and remote eye camps, provide emergency relief from natural disasters and promote cultural and educational programs that have greatly improved the quality of life of thousands of marginalized Tibetans. We offer scholarships for college-bound Tibetan youth who lack the resources to pursue higher education in Tibet and we have administered an English language and professional training program in Tibet and the US with support from the US Department of State.

## Earthquake Relief in Yushu, Tibetan Autonomous Prefecture

In April 2010, a 6.9 earthquake struck and leveled the town of Jyekundo (Kyegudo). Approximately 2,700 people died, an estimated 270 went missing and approximately 12,178 were injured (1,424 severely). As a result of the generous outpouring



of support from our donors, we quickly raised a total of \$122,785.

In addition to providing \$20,000 for the immediate relief efforts, The Tibet Fund supported six projects designed to help local Tibetans rebuild schools and re-establish small businesses. These projects included a School Clinic Improvement Project (\$15,055); Primary School Improvement Project (\$10,000); Kindergarten Reconstruction (\$15,000); a small business association Office Capacity Building & Equipment project (\$6,181); Barley Flour Mill Construction

(\$10,000) and a Micro-loan Program (\$10,000). The balance of funds is being disbursed in 2011 to support long-term economic development in the area.



## Prevention and Treatment of Eye Disease in Tibet

Over 30,000 people in Tibet suffer from cataract blindness and approximately 3,000 become blind every year. In 1999, we provided funds to construct an eye care hospital in Lhasa and have continued to support eye care treatment, training for eye care professionals and mobile eye camps conducted by the Nepal Tilganga Eye Center, under the direction of Dr. Sankuk Ruit, which performs cataract removal operations on hundreds of Tibetans living in remote areas where access to eye care is virtually non-existent. With a \$10,000 grant from the Eye Surgery Fund, The Tibet Fund supported the purchase of equipment for a new 36-bed Cataract Treatment Center in Xining, Qinghai, which was inaugurated

by Dr. Ruit in July 2010.

## Higher Education Scholarship Program

Access to higher education in Tibet is extremely limited, especially for Tibetan youth from impoverished families in rural areas. In 2008, The Tibet Fund initiated a Higher Education Scholarship Program to support Tibetan students who have been accepted at Tibet University,



# Programs in Tibet



the Teachers Training College and other universities in China but are financially unable to attend. In 2010, the program supported three students from the Tibetan Autonomous Region pursuing medical degrees.

## Cultural Exchange Program

Since our first Cultural Exchange Program in 1997 under the State Department's Ngwang Choephel Fellows Program, we have brought 86 professionals and scholars to the US to study, and supported English language, tourism management and computer and vocational training programs in Tibet. We received a grant from the State Department in 2009 for a two-year program in which we created a partnership between a Tibetan-run college and two American universities — Johns Hopkins Bloomberg School of Public Health and Brandeis University's Heller School for Social Policy and Management. Out of 20 students who began the program with English language training in Tibet, four came to the U.S. in 2011—two to study Public Health at Hopkins and two to study International Development at Brandeis. In addition to providing an unprecedented educational opportunity for the students, the program laid the foundation for future collaboration between the schools.



## Teacher Training

The Tibet Fund received a \$14,636 grant from The Shelley and Donald Rubin Foundation for a teacher training program designed to increase the availability of educational alternatives for Tibetan children, who often fail to meet national test standards under the current system. The serious lack of educational options for Tibetans fosters a general misconception in China of Tibetan society as backward and Tibetan children as less intelligent. This translates into low self-esteem among Tibetan children and a pervasive

feeling of alienation among Tibetan adults that may inhibit the advancement of Tibetan society. The workshop introduced Tibetan school principals, educators and parents to new pedagogical methods and recent findings in child development and psychology.

## Orphanages

Many children in Tibet are victims of personal tragedy or extremely difficult economic conditions that force parents to leave their sons and daughters in the care of orphanages throughout the country. We have been providing support to three orphanages in different areas of Tibet since 1999. These include the Chushul Orphanage Home, located near Lhasa, and the Waka Orphanage and Sengcham Drukmo Girls Home, both located in eastern Tibet. At Chulshul, 28 children attend local primary, middle and high schools. Three of the students have gone on to attend universities in China. Waka cares for 30 children who attend local schools and receive after-school tutoring in Tibetan and Chinese. Sengcham Drukmo Girls Home cares for 62 orphans, most of whom are girls from impoverished families that cannot care for their children. In 2010, The Tibet Fund provided \$4,800 to the Omprakash Foundation to support 15 children at Sengcham Drukmo Girls Home. We also provided \$1,500 to an orphanage in Lhasa that cares for and educates orphans and street children from various parts of Tibet.



# STATEMENT OF FINANCIAL POSITION

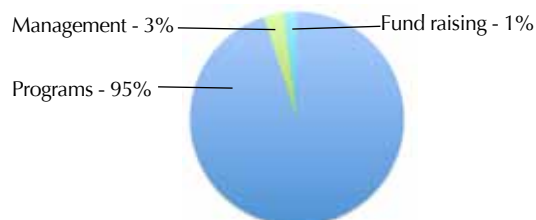
YEAR ENDED DECEMBER 31, 2010



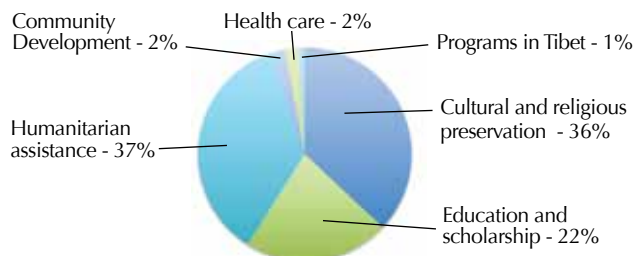
ASSETS	2010	2009
Cash and cash equivalents	4,690,416	5,889,235
Investments	2,776,205	3,025,723
Government agencies receivables	59,384	31,264
Accrued interest receivables	1,225	8,927
Prepaid expenses and other assets	36,173	41,536
Fixed assets - net	528,243	533,257
<b>Total assets</b>	<b>8,091,646</b>	<b>9,529,942</b>
<b>LIABILITIES AND NET ASSETS</b>		
Liabilities	28,500	27,800
Accounts payable and accrued expenses		1,662
Accrued payroll and payroll taxes	307,860	151,933
Refundable advance	2,176,290	1,277,688
Due to Dalai Lama Trust		
<b>Total liabilities</b>	<b>2,512,650</b>	<b>1,459,083</b>
Net assets	2,215,918	4,386,041
Unrestricted	3,363,078	3,684,818
Temporarily restricted		
<b>Total net assets</b>	<b>5,578,996</b>	<b>8,070,859</b>
<b>Total liabilities and net assets</b>	<b>\$8,091,646</b>	<b>9,529,942</b>

These statements of financial position and activities were derived from the 2010 financial statements of The Tibet Fund's independent auditors, Loeb & Troper. A copy of the audited financial statements and Form 990 FY 2010 are available upon request from The Tibet Fund.

## 2010 EXPENSES



## 2010 PROGRAMS



# STATEMENT OF ACTIVITIES

YEAR ENDED DECEMBER 31, 2010

## REVENUES, GAINS AND OTHER SUPPORT

	Unrestricted	Temporarily Restricted	Total 2010	Total 2009
Public support and revenues				
Federal grants	\$3,409,753		\$3,409,753	\$3,165,150
Special events	211,424		211,424	
Less direct expenses of special events	(27,862)		(27,862)	
Contributions	284,111		1,367,678	2,069,377
				357,949
Total public support and revenues	3,877,426	1,083,567	4,960,993	5,592,476
<b>OTHER REVENUES</b>				
Interest and dividends	139,518	1,083,567	139,518	180,556
Realized and unrealized gain (loss) on investments	437,980		437,980	544,807
Rental income	34,617		34,617	24,867
Miscellaneous income	5,936		5,936	46,239
Total other revenues	618,051		618,051	796,469
Net assets released from restrictions	1,405,307	1,405,307		
Total revenues, gains and other support	5,900,784	(321,740)	5,579,044	6,388,945

## EXPENSES

	Unrestricted	Temporarily Restricted	Total 2010	Total 2009
Program services				
Humanitarian assistance	\$2,873,881		\$2,873,881	\$2,313,581
Education and scholarship	1,675,813		1,675,813	1,252,009
Cultural and religious preservation	2,797,195		2,797,195	1,949,848
Community development	141,606		141,606	126,243
Programs in Tibet	95,617		95,617	320,357
Health Care	114,516		114,516	87,184
Total program services	7,698,628		7,698,628	6,049,222
Supporting services				
Management and general	230,015		230,015	237,825
Fund raising	142,264		142,264	117,000
Total supporting services	372,279		372,279	354,825
Total expenses	8,070,907		8,070,907	6,404,047
Change in net assets	\$(2,170,123)	\$(321,740)	-2,491,863	-15,102
Net assets -beginning of year	4,386,041	3,684,818	8,070,859	8,085,961
Net assets -end of year	\$2,215,918	\$3,363,078	\$5,578,996	\$8,070,859



# 2010 DONORS



## \$50,000+

Tides Foundation /  
Tom and Barbara Sargent  
The Isdell Foundation

## \$25,000 - \$49,999

Ann M. Down  
Olivia B. Hansen  
Orange County Community Foundation  
Dr. Victoria Sujata  
The Chodron Foundation  
The Shelley and Donald Rubin  
Foundation  
Tibetan Association of Western  
Massachusetts  
Tides Foundation

## \$10,000 - \$24,999

John and Molly Bailey  
Betsy and Jesse Fink Fund  
Eye Surgery Fund  
Eyes of Compassion Relief Organization  
G2 Holdings Corp  
Grace Family Vineyards  
Susan M. Holgate  
Judith McBean Foundation  
Daniel Naparstek  
National Endowment for Democracy  
Sage Foundation  
The Gendler Family Foundation  
The Philanthropic Collaborative  
Ting Tsung and Wei Fong Chao  
Foundation

## \$5,000 - \$9,999

Anonymous  
Aria Foundation  
Charles H. Melcher and Jessica  
Brackman  
Ed and Ann Gross Charitable Foundation  
Epic Systems Corporation  
Shep Gordon

Julian Hanberg  
L.P. Brown Foundation  
Henry Schimberg and Marjorie Layden  
Michael Lemle  
Robert and Genevieve Lynch  
Kathleen Mahoney  
Marin/San Francisco Jewish Community  
Teen Foundation  
Namaste Foundation, Inc.  
Brian Quennell  
Harry Rosenthal, Jr.  
Lilyan Schwabe  
The Flora Family Foundation  
Kevin Toner and Yodon Thonden  
Ipek Olmesek and William Robert Techar  
Jonathan and Jane Wells  
Norman Wong

## \$1000 - \$4999

Jeffrey Abbott  
Alliance Capital Management LP  
Brent and Allisyn Okawa Amil  
Anonymous  
Maria G. Platas Arreguin  
Feryde Askar  
Robert J. Barnhart  
Manuel H. Barron  
Lois and Robert M. Baylis  
Michael A. Becker  
Rachana Bhati  
Big Fish Media  
Marvin Hamlisch and Terre Blair  
David Brook  
Kamala C. and Thomas W. Buckner  
Carmela Caldera  
Jame P. and Alison Casey  
Laurie Reid Casey  
Charles Castleberry  
Saara and Robert G. Cohen  
Mark M. Colodny  
Cullen and Susan Couch  
James L. Culnan  
Patricia Chapoy De Davila  
Dean Foundation for Health  
Gregory M. DePrince

Thondup Diki  
Dreams for Tibet  
Drepung Loseling Monastery, Inc.  
Ming-tzung Dung  
Gregory Dykes  
John L. and Josephine Eastman  
James P. De Filippi III  
Paula M. Fouce  
Foursight Foundation  
George Lichter Family Foundation  
Eleanor Hewlett Gimon  
Rolando Gonzalez  
Sandra and Stephen Greenberg  
Diana Hadley  
Ben V. Ham  
Christopher and Beth Taylor Hart  
Pedro M. Beroy and Jacinta Hayne  
Barry J. and Connie J. Hershey  
Paul and Madalon Hinchey  
Allain M. and Shigeko Ando Hirsh  
Jennifer Lingi Hu  
Agnes Johnson  
Adam Kahane  
Kevin and Suzanne Schon Foundation Inc.  
Melinda Krasting  
Timothy Lewis  
Light of Awareness  
Jarrett and Maria Lilien  
Kien H Lim  
Lostand Foundation, Inc.  
April Benesich and James L. Melcher  
Geoffrey D. and Sophie Menin  
Amy K. Mithoefer  
Mary R. Morgan  
Shyla Melamed and Michael Morris  
Nextpix Productions  
Craig and Karen Neyman  
Bryan W. Dalton and Nam A. Nguyen  
Paramount Group, Inc.  
Paula A. Perlis  
Peter Luger, Inc  
James Raichart  
Ravi and Pratibha Reddy Foundation  
Robin Renzi  
Kathleen Le Mieux and William Rodman  
Jonathan and Diana Rose

# 2010 DONORS

Catherine Schreiber and Miles Ruthberg  
Elizabeth and Jose Santos  
Lisa Schejola  
Reka Darida Schmidt  
Dena A. Bramhall and John M. Scorsine  
Linda G. Scott  
Rajiv Judge and Tsering Sharchi  
Anjali Banaik Sharma  
Sarah R. Skinner  
Charles and Felicia Smith  
Perry E. H. Smith  
St. John Church and Student Center  
Adam Stern  
Don Thompson and Diana M. Takata  
Grazyna Taylor  
Anne Thacker  
The Cynthia and George Mitchell  
Foundation  
Lynnell Lewis and Forrest Tobey  
Andrea and Richard Tomasetti  
John and Donna Trammell  
Minh and Mychau Tran  
Alison J. Van Dyk  
Issa Van Dyk  
Gopi Vatsavayi  
Alicia H. Vogel  
Cong Thi C Vu  
Barry and Judy Wagner  
Steven P. Walker  
Robert L. and Champa N. Weinreb  
Nadia Wellisz  
Rebecca Winsor

The Tibet Fund could not succeed without the hard work and generosity of our colleagues. We would like to thank:

Casa Tibet Mexico  
Thupten N. Chakrisar  
Dalai Lama Center for Peace & Education  
Jamie Hanreddy  
Johns Hopkins University Bloomberg  
School of Public Health  
Human & Civil Rights Organizations of  
America  
International Campaign for Tibet  
Louise Light  
Rebecca Litman  
Leona Mason  
Me&Ro  
Nobel Women's Initiative  
Office of Tibet  
Mandy Oser  
Dr. Zorba Paster  
Peace Jam Foundation  
Eric Ripert  
Mollie Rodriguez  
Cathy Sheary  
Carol Sondesky  
The Bridge Fund  
The Theosophical Society in America  
Tibetan Community of NY and NJ  
Tibetan Women's Association  
Tibetan Youth Congress  
U.S. Department of State/Bureau of  
Population, Refugees and Migration  
U.S. Department of State/Bureau of  
Educational and Cultural Affairs

And the following colleges and universities for providing financial and other forms of assistance to our Tibetan Scholarship students in 2010:

University at Buffalo  
Ball State University  
New York University  
Indiana University  
Rochester Institute of Technology  
Lehigh University  
University of Wyoming  
Columbia University  
American University  
University of Massachusetts  
University of San Francisco  
Syracuse University  
Stony Brook University  
Emerson College  
University of Northern Iowa  
Salve Regina University





## BOARD OF DIRECTORS

Mickey Lemle, Chairman

Geoffrey Menin, Vice President

Jessica Brackman, Secretary

Susan M. Holgate, Treasurer

Pema Chhinjor

Ven. Gelek Rinpoche

Shep Gordon

Dr. Gail Gross

Dr. Thubten Jinpa Langri

Dr. Elizabeth Lindsey

Tsewang Namgyal

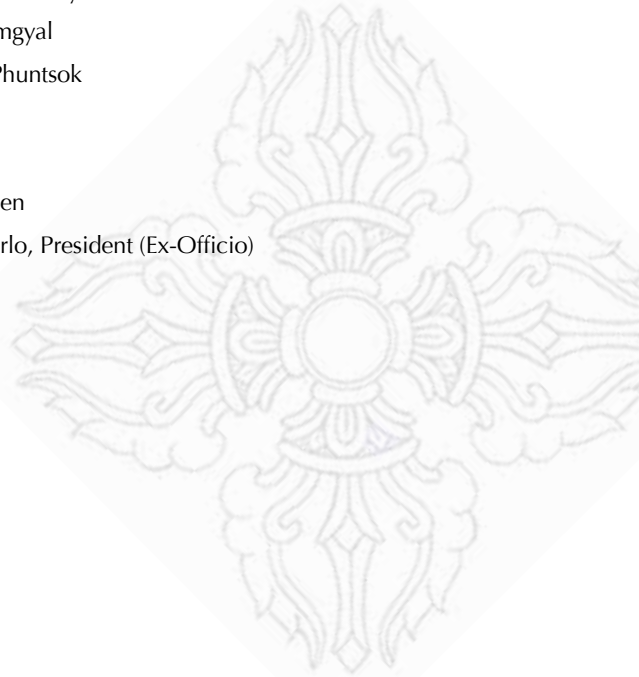
Dr. Kalsang Phuntsok

Tom Sargent

T.C. Tethong

Yodon Thonden

Rinchen Dharlo, President (Ex-Officio)



## STAFF

Rinchen Dharlo, President

Robyn Brentano, Executive Director

Tenzing Choephel Chumeego, Tibetan Scholarship Program Coordinator

Rhianna L. Murphy, Grants and Finance Administrator

Yangzom Shawa, Sponsorship Coordinator and Office Administrator

Timothy H. Silcott, Development Director

Photo credits: The Bridge Fund, p. 13 (left & center); CTA Dept. of Education p. 8 (center & top right); CTA Dept. of Health p. 9 (bottom); CTA Dept. of Home p. 12 (left); Delek Hospital, p. 9 (top & left); Foundation for the Preservation of the Mahayana Tradition, p. 13 (top right); Ginger Chih, cover; p. 1; p. 5 (left, right and center); p.6 (left, right & center); pg. 7 (all) p. 8 (left) p. 12 (bottom right); Jennifer McFarlane, p. 4; Jonathan Berger, p. 9 (mid-right); Rinchen Dharlo, p. 5 (bottom); p. 6 (bottom); Sonam Zoksang, p. 10 (all); p. 11 (all); p. 19; back cover; Srongsden School, p. 12 (top right); Tibetan Womens Association, p. 12 (bottom); Tseten Dolker, p. 8 (bottom); Waka Orphanage, p. 13 (bottom) p. 14 (bottom);

This Annual Report was designed by Bleecker & Sullivan and was printed on recycled paper.



The Tibet Fund

241 East 32nd Street

New York, NY 10016

PH 212-213-5011

FX 212-213-1219

[www.tibetfund.org](http://www.tibetfund.org)

[info@tibetfund.org](mailto:info@tibetfund.org)